



Nursing in adult social care

Whether you're a nurse in health care or social care, the knowledge and clinical skills you need are the same. However, your responsibilities and the culture within the setting may be very different.

Below, we've outlined the main characteristics of a registered nurse in social care which we hope will help you to understand what the role is but also to show how varied and rewarding it can be, particularly during the Coronavirus crisis.

A relationship-based approach to supporting wellbeing

This is seen as being central to the role, to spend time with the people in your care in order to gain understanding of their personal stories, needs, wants and ways of communicating.

Person-centred nursing practice

Through these relationships registered nurses are able to develop an in-depth understanding of a person's physical, social, emotional states, and recognise the normal patterns of their complex health and wellbeing needs.

Leading and enabling others

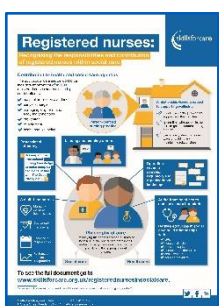
While all registered nurses are required to provide leadership and act as a role model, in the social care sector this is likely to represent a significant element of your role. This is particularly the case in settings where there may only be one or two registered nurses (per shift or in the organisation as a whole). In such situations nurses may be employed in senior positions, with responsibility for leading a mixed team of assistant practitioners and/or care staff who provide much of the direct care.

Operating within a complex regulatory and organisational landscape

The social care context requires registered nurses to operate with a high level of autonomy in relation to a complex range of legal and regulatory frameworks associated with safeguarding, ensuring wellbeing and protecting human rights.

At the frontline of health and social care boundaries

The in-depth knowledge that registered nurses possess about the needs of the people they support means that you are well placed to lead care planning across social and health care systems. You will need to be outward-looking and possess intelligence about local health care services and social support organisations. You will provide advice, signpost or refer the people you support, plus their families on occasion, to whatever help and assistance may be needed.



We recommend [taking a look at our infographic](#) which really brings the role of a registered nurse in social care to life. It's visually stimulating and really helps you to see and appreciate the complexity of the role.

If you'd like more detailed information about the role and responsibilities of a registered nurse in social care, you can download the full 'document titled ['Recognising the responsibilities and contribution of registered nurses within social care'](#).

Busting the myths

We also have a [short video](#) which busts the myths around being a registered nurse in adult social care. We think this shows that nursing in social care is a rewarding choice and not a last resort.